



CATALOG

Number 12

Chemical, Laboratory Supply, Physicians,
Druggists, Photographers and
Watchmakers Glassware

MANUFACTURED BY

THE CAMBRIDGE GLASS CO.

CAMBRIDGE, OHIO

CATALOG

(No. 12)

of

Chemical, Laboratory Supply, Physicians,
Druggists, Photographers and
Watchmakers Glassware



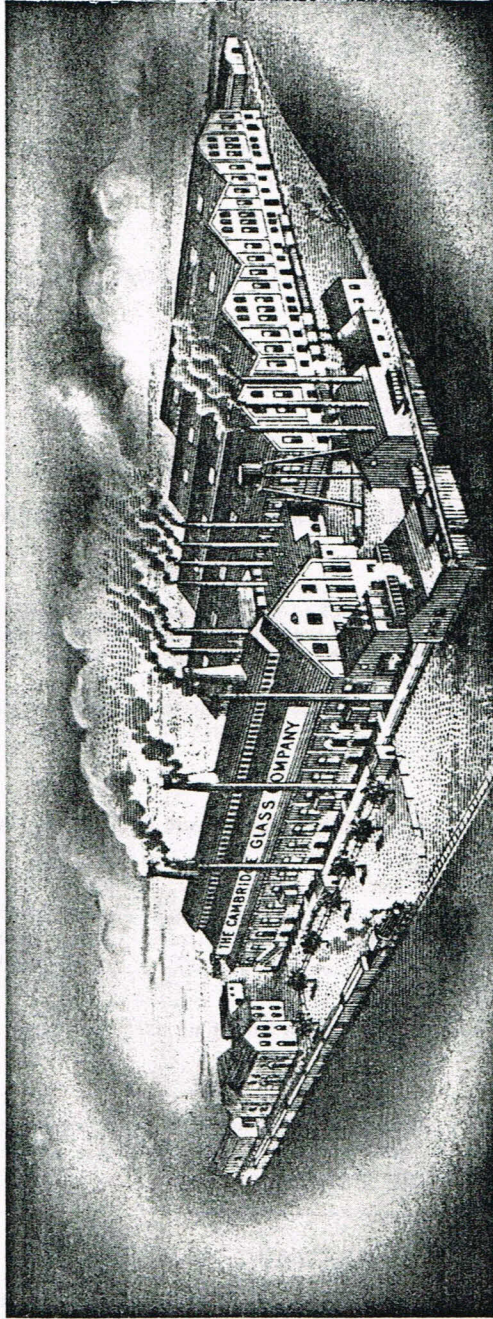
Manufactured by

The Cambridge Glass Company

Cambridge, Ohio

THE CAMBRIDGE GLASS COMPANY, CAMBRIDGE, OHIO

THE HOME OF CAMBRIDGE GLASS



The Cambridge Glass Co.
CAMBRIDGE, OHIO

THE CAMBRIDGE GLASS COMPANY, CAMBRIDGE, OHIO

PREFACE

WE TAKE PLEASURE in presenting our latest illustrated catalog of General Hospital, Medical, Surgical, Laboratory, Chemists and Photographers Glass Ware.

Please note the loose leaf form which we have prepared for your convenience. As new items are produced, new sheets will be mailed to you and we ask that they immediately be inserted when you receive them, you will then have complete information at all times.

By referring to index you will see that we have effected a simple and easy way to obtain correct information.

The quality of our products is fully established, we have produced them continuously since 1902.

We list and illustrate only the general standard items.

If you are in need of other items not shown, we will be pleased to answer your inquiry by mail.

We have a staff of efficient glass workers, also mold makers, and we are well equipped to produce any private items.

We take this opportunity to thank our customers for their patronage and support of the past and hope to improve our service and bring about conditions which will assure a continuance in the future.

Yours very truly,
THE CAMBRIDGE GLASS COMPANY,
Cambridge, Ohio.

TERMS:

Our Terms are 1% cash discount 15 days; net 30 days from date of invoice.
All shipments priced and made F. O. B. Cambridge.
Unless satisfactory rating or references given, cash should accompany order.
Remittance should be made payable to The Cambridge Glass Company at company's office, Cambridge, Ohio, in New York Exchange.

QUOTATIONS:

Prices in this catalog cancel all former prices.
All prices subject to change without notice.

DELIVERY:

All sales and contracts are subject to strikes, accidents, fires or other unavoidable delays.

CABLE ADDRESS:

"NEARCUT", Cambridge, Ohio
A. B. C. Code 5th Edition used

SHIPPING:

Shipment will be made by the cheapest and quickest route unless otherwise specified

PACKING:

All shipments are most carefully packed by the most experienced packers and every care taken against possible breakage in transit. We cannot be responsible for damage to shipments enroute, as after goods are received for in good condition by transportation company, our responsibility ceases.

Claims for lost packages, breakage or overcharges in transportation should be made to carriers.

PACKAGES:

All packages are charged for according to size and this charge is added to bottom of invoice as follows:

Standard Barrel	\$1.00
Tierces from	1.15 to \$2.85
Boxes and Crates from25 to 3.00
Cartons15 to 1.00

All Packages charges are net.

Export packages take higher prices on account of extra strength.

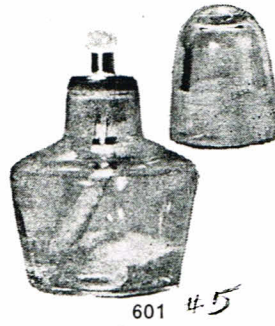
SHORTAGES:

Discrepancies in count or in ware ordered must be reported promptly upon receipt of goods. In making report do not fail to state name of the packer and return the packing slip placed in the top of the package.

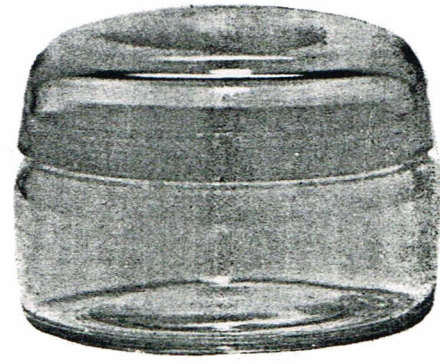
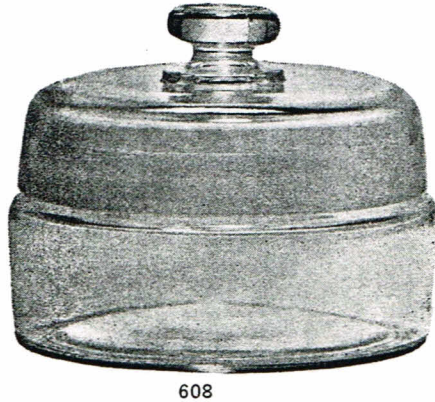
PACKING:

The quantities shown are those packed in the regular barrel, except where otherwise noted. Where quantities pack other than the regular barrel, the size or kind of package is noted under the quantity.

The manner of packing given in the following list is based on the cheapest and safest method of packing.



2805
2806
2394



600 ALCOHOL LAMP—Complete with brass burner, wick and ground on glass cap.

	No. 1	2	3
Capacity, ounces	2	4	8
Per Dozen	\$ 2.50	2.75	3.00
Dozen to Barrel	17	10	8

601 ALCOHOL LAMP—Complete with brass burner, wick and ground on glass cap.

	No. 1	2
Capacity, ounces	1	2
Per Dozen	\$ 2.25	2.50
Dozen to Barrel	45	35

605 ACID BOTTLE—Stopper or dropper ground in.

	No. 1	2	3
Capacity, ounces	1	1½	2½
Per Dozen	\$ 2.00	2.25	2.50
Dozen to Barrel	45	30	20

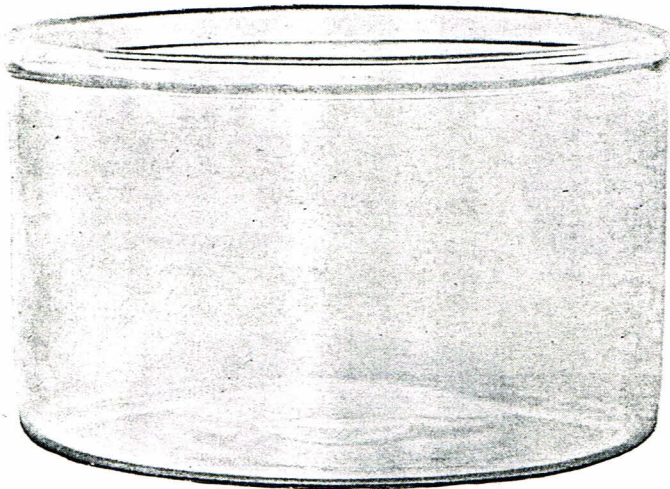
608—ALCOHOL CUP—With ground on knob cover.

Capacity, ounces	12
Diameter, inches	3¾
Depth, inches	2¾
Per Dozen	\$ 6.00
Dozen to Barrel	5

609 ALCOHOL CUP—With ground on flat cover.

	No.1	2
Capacity, ounces	3	8
Diameter, inches	29/16	3⅝
Depth, inches	19/16	2¼
Per Dozen	\$ 4.00	6.00
Dozen to Barrel	20	7

THE CAMBRIDGE GLASS COMPANY, CAMBRIDGE, OHIO



#40 611



612 - 45

611 AQUARIA—Low Form, hand made. Good weight.

	No. 1	2	3	4
Capacity, gallons -----	1	2	3	4 $\frac{1}{2}$
Diameter, inches -----	8	10	12	14
Height, inches -----	5	6 $\frac{1}{4}$	7 $\frac{1}{4}$	8 $\frac{1}{2}$
Per Dozen -----	\$12.50	16.50	22.50	30.00
Dozen to Barrel -----	1	5/12	$\frac{1}{4}$	$\frac{1}{4}$

(19x34)

	No. 5	6	7	8
Capacity, gallons -----	5 $\frac{1}{2}$	7	8 $\frac{1}{2}$	10
Diameter, inches -----	15	16	17	18
Height, inches -----	8 $\frac{1}{2}$	9 $\frac{1}{4}$	9 $\frac{3}{4}$	10 $\frac{1}{2}$
Per Dozen -----	\$36.00	48.00	60.00	75.00
Dozen to Barrel -----	1/6	1/6	1/6	1/12

(19x34) (19x34) (22x30)

45 - 612 AQUARIA—Tall Form, hand made. Good weight. (Used with metal cover as Animal Jar)

	No. 1	2	3	4	5	6
Capacity, gallons -----	$\frac{1}{2}$	1	1 $\frac{1}{2}$	2	3	4
Diameter, inches -----	6	7	8 $\frac{1}{2}$	9	10	11
Height, inches -----	5	6	8	8	9	10 $\frac{1}{2}$
Per Dozen -----	\$10.00	12.50	15.00	16.50	22.50	27.00
Dozen to Barrel -----	1 $\frac{1}{4}$	5/6	$\frac{3}{4}$	1/3	$\frac{1}{4}$	1/6

(19x34)

	No. 7	8	9	10	11
Capacity, gallons -----	5	6	8	10	12
Diameter, inches -----	12	13	14	15	16
Height, inches -----	11	12	13	14	15
Per Dozen -----	\$33.00	42.00	54.00	75.00	90.00
Dozen to Barrel -----	1/6	1/6	1/6	1/12	1/12

(19x34) (19x34) (19x34) (keg) (22x30)

THE CAMBRIDGE GLASS COMPANY, CAMBRIDGE, OHIO



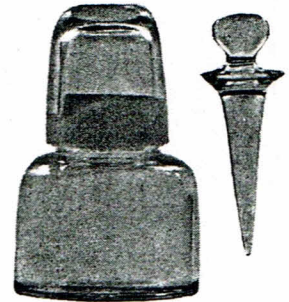
613

2796



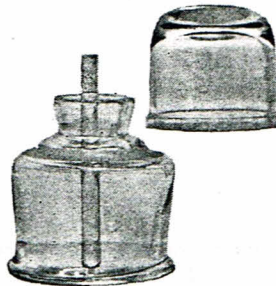
614

2795



615

5



616

613 BENZINE CUP—Ground on Cover.

Capacity, ounces	2
Inside diameter, inches	2 9/16
Inside Depth, inches	1 1/4
Per Dozen	\$ 1.80
Dozen to Barrel	35

614 BENZINE CUP—Ground on Knob Cover.

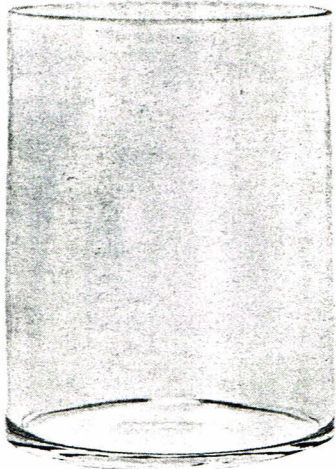
Capacity, ounces	4 1/4
Inside diameter, inches	2 7/8
Inside Depth, inches	1 7/8
Per Dozen	\$ 2.00
Dozen to Barrel	18

615—BALSAM BOTTLE—Ground on Cap with dropper.

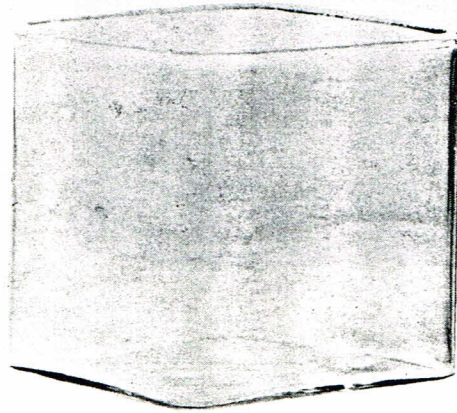
Capacity, ounces	1 1/2
Per Doz.	\$ 2.50
Dozen to Barrel	24
Dropper, Per Doz.	\$.75
Glass Rod Dropper, Per Doz.	\$.25

616—BALSAM BOTTLE—Ground on Cover with Rod dropper.

Capacity, ounces	2
Per Doz.	\$ 2.25
Dozen to Barrel	24
Glass Rod Dropper, Per Doz.	\$.25



617 24
618 24



619

24 - 617—BATTERY JAR—Round, Hand Made. Ground and beveled top.

	No. 1	2	3	4	5	6	7	8
Capacity, ounces	29	36	45	64	72	74	96	122
Diameter, inches	4	4	4½	5	6	5	5	5
Height, inches	4	5	5	6	6	7	9	11
Per Dozen	\$4.75	5.25	6.25	8.00	10.00	10.00	11.00	12.00
Dozen to Bbl.	5	4	3½	2½	2	2	1½	1 1/3

	No. 9	10	11	12	13	14	15	16
Capacity, ounces	123	140	224	233	384	448	512	740
Diameter, inches	6	6	7	8	8½	9	9	9
Height, inches	8	9	9	9	12	12	15	19
Per Dozen	\$11.10	13.00	14.00	16.50	24.00	24.00	27.50	35.00
Dozen to Bbl.	1	5/6	2/3	1½	1½*	1½*	1½*	1½*

(19x34)

(* Grade)

618—BATTERY JAR—Round, Blown, with seam. Ground top.

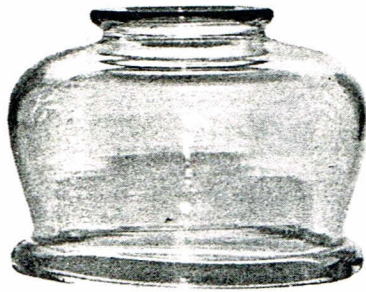
	No. 1	2	3	4
Capacity, ounces	39	44	74	128
Diameter, inches	4½	4½	5	6
Height, inches	5	6	7	8
Per Dozen	\$ 3.50	3.75	4.50	5.75
Dozen to Bbl.	3½	3½	2	1

619 BATTERY JAR—Square, Blown, ground top.

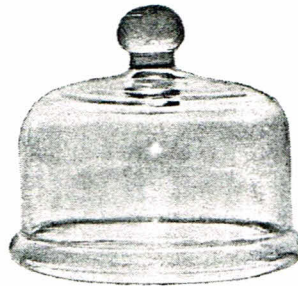
	No. 1	2	3	4	5
Capacity, ounces	27	29	30	32	57
Length, inches	3½	4	2½	2½	4
Width, inches	3½	4	4¼	4¼	4
Height, inches	5	4	6	7	8
Per Dozen	\$ 4.00	4.00	4.50	5.00	6.00
Dozen to Barrel	6	6*	6*	4	2 5/6

(*19x34)

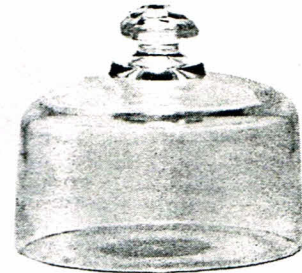
THE CAMBRIDGE GLASS COMPANY, CAMBRIDGE, OHIO



624



625



626

3 - 624 BLADDER GLASS—Globe shape.

Inside diameter large end, inches	4 3/8
Height, inches	4
Per Dozen	\$12.00
Dozen to Barrel	3

100 - 625—BELL GLASS—Low form with knob, heavy ground flange.

Guaranteed to hold a vacuum when properly used.

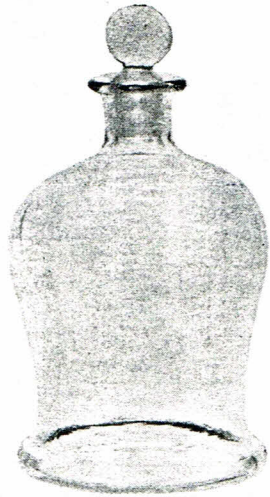
	No. 1	2	3	4	5	6	7	8
Inside diam. in.	5	6	7	8	9	10	12	16
Inside ht., in.	3 1/2	4	4 1/2	5	6	8	10	11
Per Dozen	\$14.00	16.00	19.00	22.50	27.00	35.00	42.00	80.00
Dozen to Barrel	3	2 1/3	2 1/2*	1*	1 1/2	1 1/4	1/6	1/6*

(*19x34)

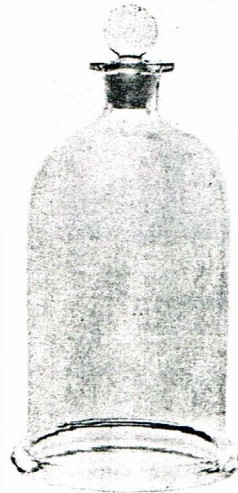
626 BELL GLASS—Without flange, ground level.

	No. 1	2	3	4	5
Inside diameter, inches	3	3 1/4	3 1/2	3 3/4	4
Inside height, inches	2	2 1/16	2 1/8	2 1/8	2 1/8
Per Dozen	\$ 2.25	2.50	2.75	3.00	3.25
Dozen to Barrel	30	25	22	20	18

	No. 6	7	8	9
Inside diameter, inches	4 3/4	5	5 1/4	5 1/2
Inside height, inches	2 1/2	2 1/2	2 1/2	2 1/2
Per Dozen	\$ 3.50	3.75	4.00	4.25
Dozen to Barrel	15	12	10	8



628



629

628 BELL GLASS—Ground in Stopper. Heavy Grand flange.
Guaranteed to hold a vacuum when properly used.

	No. 1	2	3	4	5
Capacity, gallons -----	1/2	1	2	3	5
Inside diameter, inches -----	5	6	7	8 1/2	10
Inside height, inches -----	8	10	12	13	16
Per Dozen -----	\$20.00	27.50	36.00	45.00	82.50
Dozen to Barrel -----	1 1/2*	1*	1/2*	1/3*	1/6*

(*22x30)

(Any of above Bell Jars can be furnished without stoppers at same price as No. 635).

60 - 629 BELL GLASS—Ground in stopper. Heavy Ground Flange.
Guaranteed to hold a vacuum when properly used.

	No. 1	2	3	4	5
Capacity, gallons -----	1/2	1	2	3	5
Inside diameter, inches -----	5	6	7	8 1/2	9 1/2
Inside height, inches -----	9	11	15	15	18
Per Dozen -----	\$20.00	27.50	36.00	45.00	82.50
Dozen to Barrel -----	1 1/3	2/3	1/3*	1/4*	1/6*

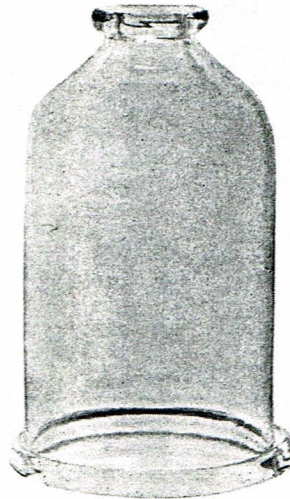
(*22x30)

(These Bell Jars without stoppers furnished same price as No. 636).

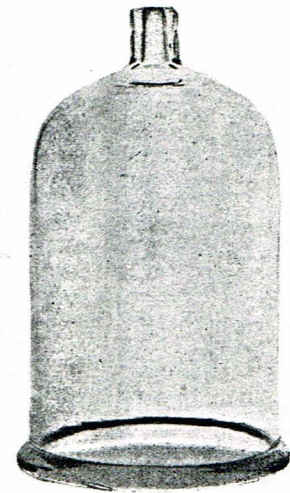
THE CAMBRIDGE GLASS COMPANY, CAMBRIDGE, OHIO



631



632



633 = 7.

80 - 631 BELL GLASS—Open top, ground flange top and bottom.

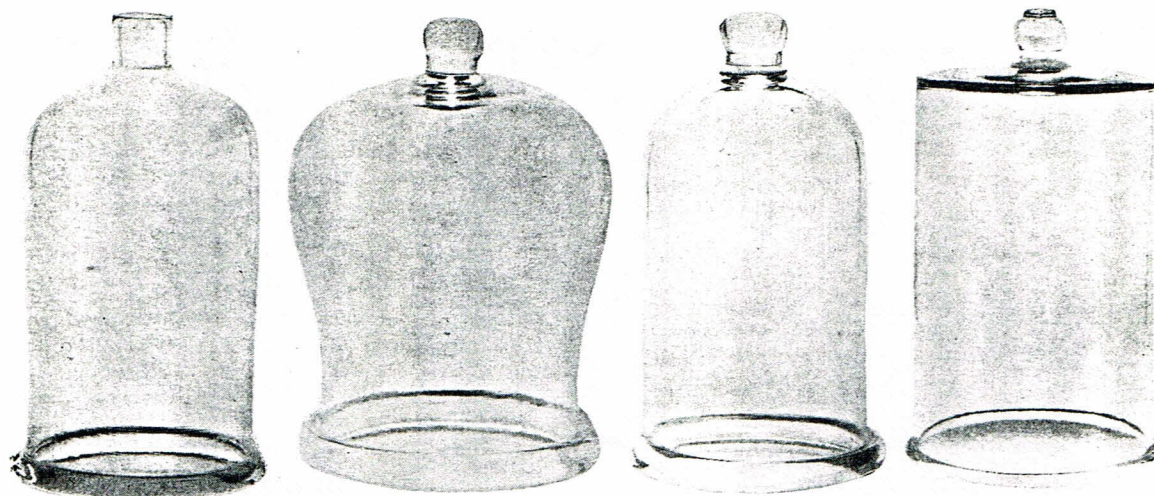
	No. 1	2	3	4	5
Capacity, gallons	1/2	1	2	3	5
Inside diameter, inches	5	6	7	8 1/2	10
Inside height, inches	8	10	12	15	16
Per Dozen	\$18.00	24.00	30.00	39.00	80.00
Dozen to Barrel	1 1/2	1	1/2	1/4	1/6
	(22x30)	(19x34)		(24x30)	(24x30)

81 - 632 BELL GLASS—Open Top, heavy ground flange top and bottom.

	No. 1	2	3	4	5
Capacity, gallons	1/2	1	2	3	5
Inside diameter, inches	5	6	7	8 1/2	9 1/2
Inside height, inches	9	11	15	15	18
Per Dozen	\$18.00	24.00	30.00	39.00	80.00
Dozen to Barrel	1 1/3	2/3	1/3	1/4	1/6
			(19x34)	(22x30)	(24x30)

633 BELL GLASS—Open Top, for cap, ground flange.

	No. 1	2	3	4	5
Capacity, gallons	1/2	1	2	3	5
Inside diameter, inches	5	6	7	8 1/2	9 1/2
Inside height, inches	9	11	15	15	18
Per Dozen	\$18.00	24.00	30.00	39.00	80.00
Dozen to Barrel	1 1/3	2/3	1/3	1/4	1/6
			(19x34)	(22x30)	(24x30)



77/ 634

119 635

120 636

637

634 BELL GLASS—Open Top, heavy ground flange. Guaranteed to hold a vacuum when properly used.

	No. 1	2	3	4	5
Capacity, gallons	1 $\frac{1}{2}$	1	2	3	5
Inside diameter, inches	5	6	7	8 $\frac{1}{2}$	9 $\frac{1}{2}$
Inside height, inches	9	11	15	15	18
Per Dozen	\$18.00	24.00	30.00	39.00	80.00
Dozen to Barrel	1 1 $\frac{1}{3}$	2 $\frac{2}{3}$	1 $\frac{1}{3}$	1 $\frac{1}{4}$	1 $\frac{1}{6}$
			(19x34)	(22x30)	(24x30)

635 BELL GLASS—Swell form with knob, ground flange.

	No. 1	2	3	4	5
Capacity, gallons	1 $\frac{1}{2}$	1	2	3	5
Inside diameter, inches	5	6	7	8 $\frac{1}{2}$	9 $\frac{1}{2}$
Inside height, inches	8	10	12	13	16
Per Dozen	\$18.00	24.00	30.00	39.00	80.00
Dozen to Barrel	1 $\frac{1}{2}$	1	1 $\frac{1}{2}$	1 $\frac{1}{3}$	1 $\frac{1}{6}$
	(22x30)	(24x30)	(22x30)	(24x30)	(24x34)

636 BELL GLASS—Tall form with knob, ground flange.

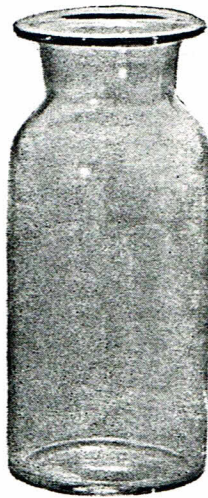
	No. 1	2	3	4	5	6
Capacity, gallons	1 $\frac{1}{4}$	1 $\frac{1}{2}$	1	1 $\frac{1}{2}$	2	2
Inside diameter, inches	4	5	6	6 $\frac{1}{2}$	7	8
Inside height, inches	8	9	11	14	15	13
Per Dozen	\$15.00	18.00	24.00	27.00	30.00	30.00
Dozen to Barrel	2 2 $\frac{2}{3}$	1 1 $\frac{1}{3}$	2 $\frac{2}{3}$	1 $\frac{1}{2}$	1 $\frac{1}{3}$	1 $\frac{1}{3}$
				(19x34)	(22x30)	

	No. 7	8	9	10	11	12
Capacity, gallons	2 $\frac{1}{2}$	3	3 $\frac{1}{2}$	4	4 $\frac{1}{2}$	5
Inside diameter, inches	8	8 $\frac{1}{2}$	8 $\frac{1}{2}$	9	9 $\frac{1}{2}$	10
Inside height, inches	15	15	17	18	18	18
Per Dozen	\$36.00	39.00	45.00	56.00	65.00	80.00
Dozen to Barrel	1 $\frac{1}{3}$ *	1 $\frac{1}{4}$ *	1 $\frac{1}{3}$ **	1 $\frac{1}{4}$ **	1 $\frac{1}{6}$ **	1 $\frac{1}{6}$ **
	(*22x30)		(**24x30)			

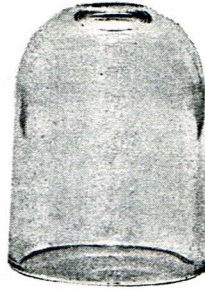
637 BELL GLASS—Tall form, slightly square top, with light flange.

	No. 1	2	3	4
Capacity, gallons	2	3	4 $\frac{1}{2}$	5 $\frac{1}{2}$
Inside diameter, inches	8	9	10	11
Inside height, inches	13	15	17	20
Per Dozen	\$30.00	39.00	65.00	80.00
Dozen to Barrel	1 $\frac{1}{3}$ *	1 $\frac{1}{4}$ *	1 $\frac{1}{6}$ *	1 $\frac{1}{6}$ *
	(*22x30)			(24x30)

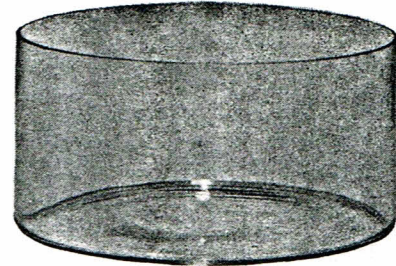
THE CAMBRIDGE GLASS COMPANY, CAMBRIDGE, OHIO



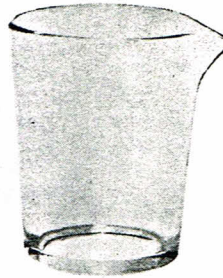
647



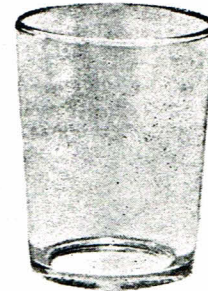
648



650



644 Lipped
(151) - 3
- 1 - 3



644 Not Lipped
(151)

644 BEAKER—Tumbler, Pressed, ground bottom, lipped.

Capacity, ounces	8
Per Dozen	\$ 1.40
Dozen to Barrel	21

Also made not lipped at same price.

647 BOTTLE—Wide Mouth or Percolating Jar (Leyden Jar)

	No. 1	2	3	4	5	6	7	8
Capacity, oz.---	8	12	16	32	64	128	256	384
Capacity, gals.---					$\frac{1}{2}$	1	2	3
Per Dozen ---- \$	5.25	5.50	6.00	9.00	11.00	16.00	22.50	30.00
Dozen to Barrel	12	8	6	3	2	$\frac{2}{3}$	$\frac{1}{2}$	$\frac{1}{4}$

(19x34)

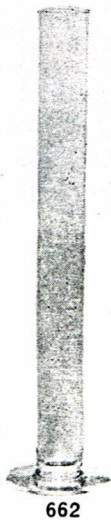
648 REAGENT BOTTLE CAP—Pressed

	No. 1	2	3	4
Size Bottle to fit, ounces	4	8	16	32
Inside diameter, inches	$1\frac{1}{4}$	$1\frac{5}{8}$	$1\frac{7}{8}$	$2\frac{1}{8}$
Inside height, inches	2	$2\frac{3}{8}$	$2\frac{1}{2}$	$2\frac{5}{8}$
Per Dozen	\$ 1.15	1.25	1.50	1.90
Dozen to Barrel	60	50	30	45

650 CRYSTALLIZING DISHES

	No. 1	2	3	4	5	6	7	8
Diameter, mm.---	45	50	55	60	60	70	75	85
Height, mm.---	30	35	25	25	35	35	35	25
Per Dozen ---- \$	1.20	1.20	1.20	1.20	1.20	1.40	1.40	1.40
Dozen in Bbl.---	50	45	45	35	35	30	30	30
	No. 9	10	11	12	13	14	15	16
Diameter, mm.---	80	90	95	100	100	115	120	125
Height, mm.---	40	30	40	40	50	45	45	65
Per Dozen ---- \$	1.40	1.80	1.80	1.80	1.80	2.75	2.75	3.00
Dozen in Bbl.---	20	20	15	10	9	7	7	5
	No. 17	18	19	20	21	22	23	24
Diameter, mm.---	140	150	150	150	185	185	200	200
Height, mm.---	45	45	65	75	65	75	95	65
Per Dozen ---- \$	4.00	4.20	4.20	4.20	7.25	7.25	7.75	9.00
Dozen in Bbl.---	5	$4\frac{1}{2}$	4	4	4	4	3	$3\frac{1}{2}$
				No. 25	26	27	28	29
Diameter, mm.---				200	210	220	230	240
Height, mm.---				75	70	70	85	85
Per Dozen ---- \$				9.00	9.50	10.00	10.50	12.00
Dozen in Bbl.---				3	$2\frac{1}{2}$	3	$1\frac{1}{2}$	1

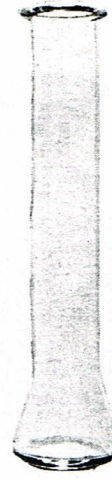
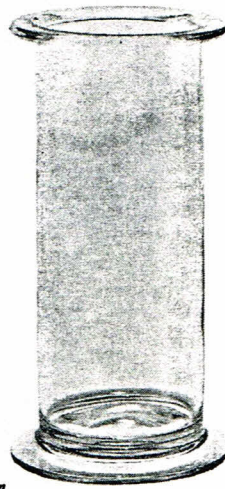
THE CAMBRIDGE GLASS COMPANY, CAMBRIDGE, OHIO



* 2



* 3



662—CYLINDER or HYDROMETER JAR, on foot. Without lip or rim.
Outside dimension. Same as 663.

663 CYLINDER or HYDROMETER JAR, on foot, with lip. Outside dimensions.

	No. 1	2	3	4	5	6	7	8	9
Height, inches	4	5	6	6	6	8	8	8	8
Diameter, in.	1	1	1	1 1/4	1 1/2	1 1/4	1 1/2	1 3/4	2
Per Dozen	\$ 2.30	2.40	2.50	3.10	3.20	3.40	3.40	3.40	3.50
Dozen to Bbl.	30	20	15	14	10	10	9	8 1/2	8

	No. 10	11	12	13	14	15	16	17
Height, inches	10	10	12	12	12	12	15	15
Diameter, inches	1 1/2	2	1 1/2	1 3/4	2	2 1/2	1 3/4	1 1/2
Per Dozen	\$ 3.75	4.00	4.20	4.50	5.25	5.50	4.75	5.10
Dozen to Bbl.	7	6	4	5	3	3	3	3

	No. 18	19	20	21
Height, inches	15	18	18	24
Diameter, inches	2	2 1/2	3 1/4	3 1/4
Per Dozen	\$ 5.50	8.25	9.25	10.75
Dozen to Bbl.	2 1/2	2	1 1/4	1

(19x34)

3

666 CYLINDER or HYDROMETER JAR, on foot, wide form, with ground top.
For use with plates. Outside dimensions.

	No. 1	2	3	4	5	6	7
Height, inches	8	8	12	12	15	20	24
Diameter, inches	3	4 3/4	3	4 3/4	3	3	3
Per Dozen	\$ 6.00	10.00	7.50	13.00	9.00	13.50	15.00
Dozen to Bbl.	4	2	2 1/2	1 1/2	1 1/2	1	1

(22x30) (19x34) (19x34)

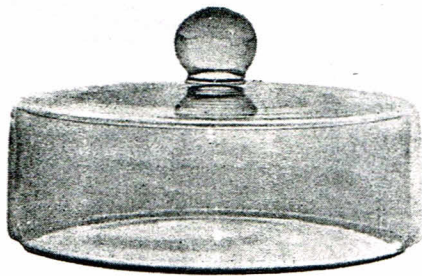
667 CYLINDER or SUGAR HYDROMETER JAR with ground top. Outside dimensions.

	No. 1	2
Height, inches	12	12
Diameter, inches	1 1/2	2
Per Dozen	\$ 4.75	5.00
Dozen to Bbl.	4	4

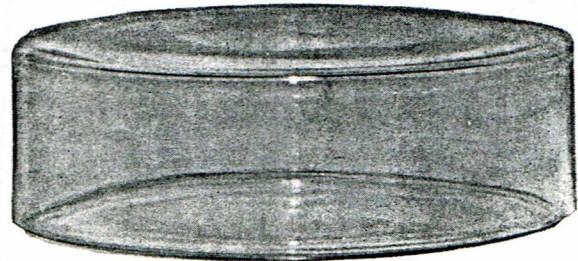
730 CYLINDER or SUGAR HYDROMETER JAR, with unground rim. Outside dimensions.

	No. 1	2
Height, inches	12	12
Diameter, inches	1 1/2	2
Per Dozen	\$ 4.50	4.75
Dozen to Bbl.	4	4

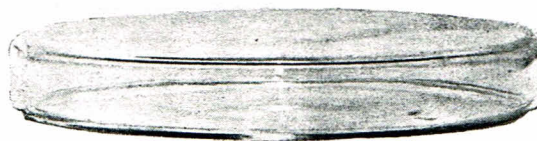
THE CAMBRIDGE GLASS COMPANY, CAMBRIDGE, OHIO



668



669



670-671

668 CULTURE DISH or MOIST CHAMBER, large double dishes of heavy glass, with loose fitting covers with knob.

	No. 1	2	3	4
Diameter of cover, mm.-----	150	200	220	240
Height, inside, mm. -----	50	70	70	80
Per Dozen -----	\$ 8.50	16.50	20.00	24.00
Dozen to Barrel -----	3	1	2/3	2/3
Dozen to Carton -----	1/3	1/6	1/6	1/6

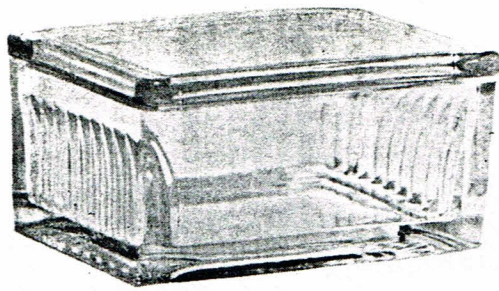
669 CULTURE DISH or MOIST CHAMBER. Large double dishes of heavy glass with loose fitting cover without knob.

	No. 1	2	3	4
Diameter of cover, mm. -----	150	200	220	240
Height, inside mm. -----	50	70	70	80
Per Dozen -----	\$ 7.50	15.50	16.50	20.00
Dozen to Barrel -----	4	1 1/2	2/3	2/3
Dozen to Carton -----	1/3	1/6	1/6	1/6

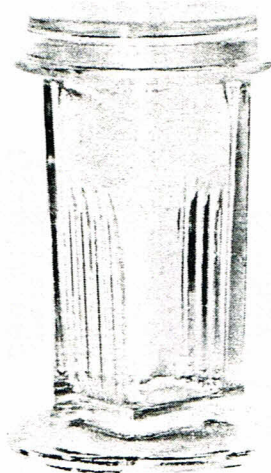
670-671 CULTURE or PETRI DISH—with cover—Clear glass with flat bottom. Well annealed to withstand sterilization. This glass is not a non-corrosive glass or heat resistance glass.

	No. 1	2	3	4	5	6	7	8
Dia. of cover, mm.---	50	60	60	75	75	80	80	90
Ht. of lower dish, mm	10	10	15	10	15	10	15	10
Per Gross -----	\$27.00	30.00	30.00	33.00	33.00	36.00	36.00	37.50
Doz. to Carton -----	12	12	12	12	12	12	12	12

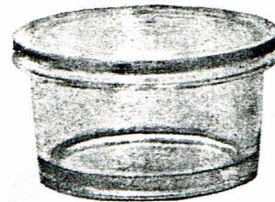
	No. 9	10	11	12	13	14	15	16	17
Dia. Cover, mm.	100	100	150	150	200	200	220	220	240
Ht. lower dish, (mm.)	10	15	15	20	20	35	30	40	50
Per Gross -----	\$39.00	39.00	90.00	90.00	180.00	180.00	200.00	200.00	250.00
Doz. to Carton	12	12	6	6	2	2	1 1/2	1 1/2	1



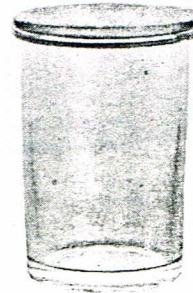
672



673



677
678
679



680

- 672 STAINING DISH or SLIDE BOX & COVER—for staining specimens on the slide, with loose fitting cover and grooves to keep slides in place. To accomodate ten slides.
- | | |
|-----------------------|------------------------|
| Width | 75 mm or 2 5/16 inches |
| Length | 58 mm or 3 3/16 inches |
| Per Dozen | \$ 2.00 |
| Dozen in Barrel | 20 |
| Doz. to Carton | 1 |
- 673 COPLIN STAINING JAR and COVER—Standard size. With ground on cover.
Capacity ten slides 3"x1".
- | | |
|-----------------------------|---------|
| Per Gross | \$28.00 |
| Dozen to Barrel | 18 |
| Dozen to Carton | 1 |
| Cover only, Per Gross | \$ 9.00 |
- 677 STENDER DISH or PREPARATION JAR—with ground on Cover.
- | | |
|------------------------|---------|
| Diameter, inches | 1 3/8 |
| Height, inches | 3/4 |
| Per Dozen | \$ 1.10 |
| Dozen to Barrel | 120 |
| Dozen to Carton | 2 |
- 678 STENDER DISH or PREPARATION JAR—with ground on Cover.
- | | |
|------------------------|---------|
| Diameter, inches | 2 |
| Height, inches | 1 |
| Per Dozen | \$ 1.25 |
| Dozen to Barrel | 45 |
| Dozen to Carton | 1 |
- 679 STENDER DISH or PREPARATION JAR—with ground on Cover.
- | | |
|------------------------|---------|
| Diameter, inches | 2 3/8 |
| Height, inches | 1 1/8 |
| Per Dozen | \$ 1.50 |
| Dozen to Barrel | 35 |
| Dozen to Carton | 1 |
- 680 STENDER DISH or PREPARATION JAR—with ground on Cover.
- | | |
|------------------------|---------|
| Diameter, inches | 2 3/8 |
| Height, inches | 3 3/4 |
| Per Dozen | \$ 1.75 |
| Dozen to Barrel | 16 |
| Dozen to Carton | 1 |



682 - 4



685 - 1

682 DESICCATING JAR—Scheibler—Ground on knob corner. Hand made, heavy weight.

	No. 1	2	3	4	5
Inside Diameter, inches	4	5	6	8	10
Inside Height, inches	4½	6	6	8	9¼
Per Dozen	\$17.00	20.00	24.00	37.50	50.00
Dozen to Barrel	2½	1 2/3	1	½	1/3
		(19x34)	(22x30)	(24x30)	(24x30)

683 DESICCATING JAR—Fruehling and Schultz—Ground on knob cover. Hand Made. Heavy weight.

	No. 1	2
Inside Diameter, inches	8	10
Inside Height, inches	8	9¼
Per Dozen	\$37.50	60.00
Dozen to Barrel	½	1/3
	(24x30)	(24x30)

(Same as 685, except with solid knob)

684 DESICCATING JAR—Scheibler—Ground on cover, with hole in cover, for stoppering. Hand made, heavy weight.

	No. 1	2	3
Inside Diameter, inches	6	8	10
Inside Height, inches	6	8	9¼
Per Dozen	\$24.00	37.50	60.00
Dozen to Barrel	1	½	1/3
	(22x30)	(22x30)	(24x30)

(Same as 682 except with hole in cover)

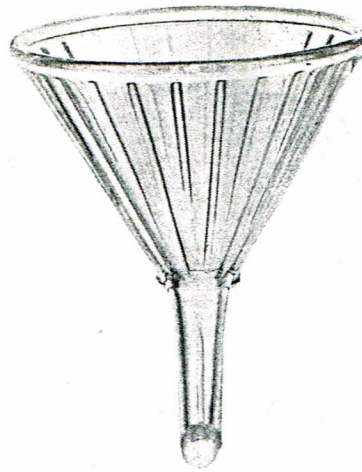
685 DESICCATING JAR—Fruehling and Schultz—Ground on Cover, with hole in cover for stoppering. Hand made, heavy weight.

	No. 1	2
Inside Diameter, inches	8	10
Inside Height, inches	8	9¼
Per Dozen	\$37.50	60.00
Dozen to Barrel	½	1/3
	(24x30)	(24x30)

Prices for Covers only are 1/3 of complete article.



694



695
696



698

694 FUNNEL—Plain, Pressed, Fire polished, making a stronger, more rugged funnel, less likely to chip.

	No. 1	2	3	4	5	6	7	8	9
Capacity, ounces_	1	2	4	8	16	32	64	128	256
Diam., inches----	2 $\frac{1}{2}$	2 $\frac{3}{4}$	3 $\frac{3}{4}$	4 $\frac{3}{4}$	5 $\frac{3}{4}$	7 $\frac{1}{4}$	8 $\frac{3}{4}$	10 $\frac{1}{4}$	13
Per Dozen -----	\$1.30	1.50	2.00	2.50	3.50	5.00	6.50	13.00	21.00
Dozen to Barrel	25	15	11	6	3	2	1 $\frac{1}{2}$	5/6	1/3

695 FUNNEL—Ribbed, Pressed, Fire Polished, making a stronger, more rugged funnel, less likely to chip.

	No. 1	2	3	4	5	6	7	8	9
Capacity, ounces_	1	2	4	8	16	32	64	128	256
Diam., inches----	2 $\frac{1}{2}$	2 $\frac{3}{4}$	3 $\frac{3}{4}$	4 $\frac{3}{4}$	5 $\frac{3}{4}$	7 $\frac{1}{4}$	8 $\frac{3}{4}$	10 $\frac{1}{4}$	13
Per Dozen -----	\$1.30	1.50	2.00	2.50	3.50	5.00	6.50	13.00	21.00
Dozen to Barrel	25	15	11	6	3	2	1 $\frac{1}{2}$	5/6	1/3

696—FUNNEL—Ribbed, Pressed, Same as No. 695, but not fire polished.

	No. 1	2	3	4	5	6	7	8	9
Capacity, ounces_	1	2	4	8	16	32	64	128	256
Diam., inches----	2 $\frac{1}{2}$	2 $\frac{3}{4}$	3 $\frac{3}{4}$	4 $\frac{3}{4}$	5 $\frac{3}{4}$	7 $\frac{1}{4}$	8 $\frac{3}{4}$	10 $\frac{1}{4}$	13
Per Dozen -----	\$1.00	1.20	1.50	1.75	2.00	3.75	5.25	9.25	15.00
Dozen to Barrel	25	15	11	6	3	2	1 $\frac{1}{2}$	5/6	1/3

698—SUGAR FUNNEL—Ribbed, no stem, for sugar analysis.

	No. 1	2	3	4
Capacity, ounces -----	2	4	8	16
Diameter, inches -----	2 $\frac{3}{4}$	3 $\frac{3}{4}$	4 $\frac{3}{4}$	5 $\frac{3}{4}$
Per Dozen -----	\$ 1.60	1.95	2.50	3.25
Dozen to Barrel -----	50	30	15	9

All funnel stems wrapped with corrugated cardboard to protect from breakage

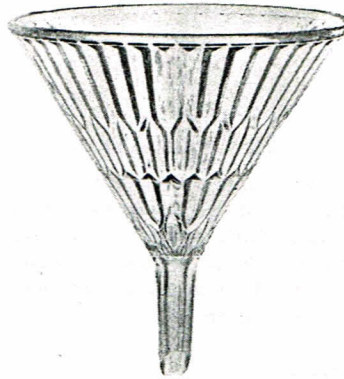
THE CAMBRIDGE GLASS COMPANY, CAMBRIDGE, OHIO



699



725



727

699 SUGAR FUNNEL—Plain, no stem, for sugar analysis.

	No. 1	2	3	4
Capacity, ounces	2	4	8	16
Diameter, inches	2 $\frac{3}{4}$	3 $\frac{3}{4}$	4 $\frac{3}{4}$	5 $\frac{3}{4}$
Per Dozen	\$ 1.60	1.95	2.50	3.25
Dozen to Barrel	50	30	15	9

725 FUNNEL—Handy, pressed, fire polished.

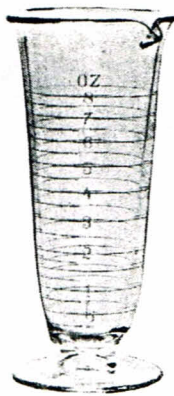
	No. 1	2
Capacity, ounces	2	4
Diameter, inches	2 $\frac{1}{4}$	2 $\frac{3}{4}$
Per Dozen	\$.65	1.00
Dozen to Barrel	60	40

727 FUNNEL—with diagonal fluting for rapid filtering. Fire polished.

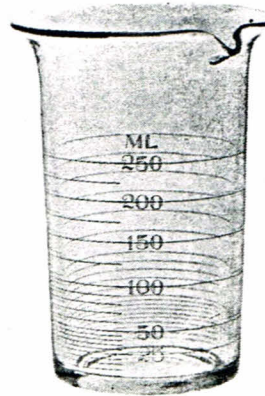
Capacity, ounces	64
Diameter, inches	8 $\frac{1}{2}$
Per Dozen	\$ 7.50
Dozen to Barrel	1 $\frac{1}{2}$

All funnel stems wrapped with corrugated cardboard to protect from breakage

THE CAMBRIDGE GLASS COMPANY, CAMBRIDGE, OHIO



100



100 GRADUATE—"EXACT" STYLE GRADUATION

Government or Standard Shape (Footed)

Beaker shape (without foot. Sizes marked (*) not made Beaker Shape.

Of good weight to stand hard usage. Acid lines and figures (etched) filled in with permanent fused orange or white enamel.

Each graduation accurately done in accordance with specifications of the U. S. Bureau of Standards.

American Scale, Single

	No. 1	2	3	4	5
Capacity, ounces	60m*	120m*	1 $\frac{1}{2}$	1	2
Per Dozen	\$ 4.00	4.75	3.80	4.10	4.50

	No. 6	7	8	9	10
Capacity, ounces	4	8	16	32	64*
Per Dozen	\$ 5.50	7.00	10.00	15.00	24.00

Metric Scale, Single

	No. 1	2	3	4	5
Capacity, ml.	5*	10*	15	30	60
Per Dozen	\$ 3.90	4.50	3.90	4.25	4.90

	No. 6	7	8	9	10
Capacity, ml.	125	250	500	1,000	2,000*
Per Dozen	\$ 6.00	7.50	10.50	15.50	24.00

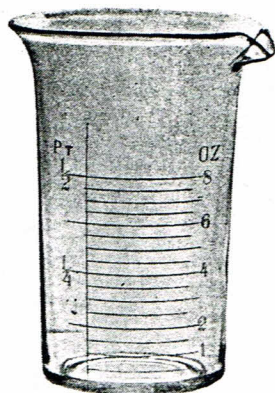
Double Scale

	No. 1	2	3	4	5
Capacity, oz.	60m*	120m*	1 $\frac{1}{2}$	1	2
Capacity, ml.	5*	10*	15	30	60
Per Dozen	\$ 4.80	5.50	4.50	4.90	5.85

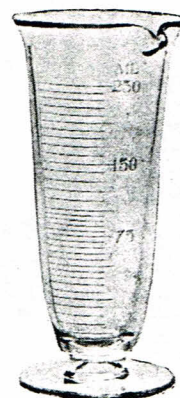
	No. 6	7	8	9	10
Capacity, oz.	4	8	16	32	64*
Capacity, ml.	125	250	500	1,000	2,000*
Per Dozen	\$ 6.95	9.00	12.00	18.00	30.00

Note: Care in cleaning and handling these graduates will prolong life of the enamel. Do not use strong acid or alkali cleaners. For cleaning we suggest a warm dilute solution of Tri-Sodium Phosphate.

THE CAMBRIDGE GLASS COMPANY, CAMBRIDGE, OHIO



200



200 GRADUATE—"PERFECTION" STYLE GRADUATION.

Government or Standard Shape (Footed).

Beaker shape (without foot). Sizes marked (*) not made Beaker Shape. Of good weight to stand hard usage. Acid lines and figures (etched) filled in with permanent fused orange or white enamel. Each graduation accurately calibrated. Perfection style does not have as many graduated lines and figures as the Exact. For those who prefer a cheap but accurate graduate.

American Scale, Single

	No. 1	2	3	4	5
Capacity, oz. -----	60m*	12m*	1 $\frac{1}{2}$	1	2
Per Dozen -----	\$ 3.85	4.10	3.50	3.75	4.40

	No. 6	7	8	9	10
Capacity, oz. -----	4	8	16	32	64*
Per Dozen -----	\$ 5.00	6.50	8.75	12.25	20.00

Metric Scale

	No. 1	2	3	4	5
Capacity, ml. -----	5*	10*	15	30	60
Per Dozen -----	\$ 3.60	3.75	3.50	3.60	4.30

	No. 6	7	8	9	10
Capacity, ml. -----	125	250	500	1,000	2,000*
Per Dozen -----	\$ 5.50	7.00	9.00	12.50	21.00

Double Scale

	No. 1	2	3	4	5
Capacity, oz. -----	60m*	12m*	1 $\frac{1}{2}$	1	2
Capacity, ml. -----	5*	10*	15	30	60
Per Dozen -----	\$ 4.40	4.80	4.10	4.50	5.00

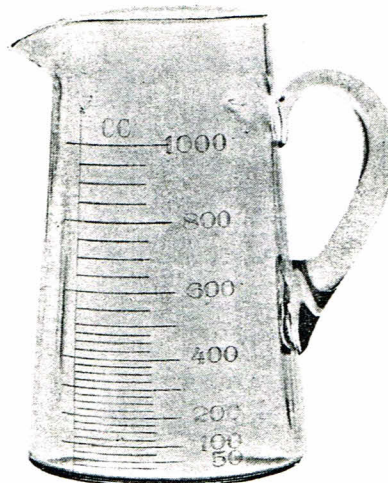
	No. 6	7	8	9	10
Capacity, oz. -----	4	8	16	32	64*
Capacity, ml. -----	125	250	500	1,000	2,000*
Per Dozen -----	\$ 6.40	7.70	10.00	15.00	25.00

Note: Care in cleaning and handling these graduates will prolong life of the enamel. Do not use strong acid or alkali cleaners. For cleaning we suggest a warm dilute solution of Tri-Sodium Phosphate.

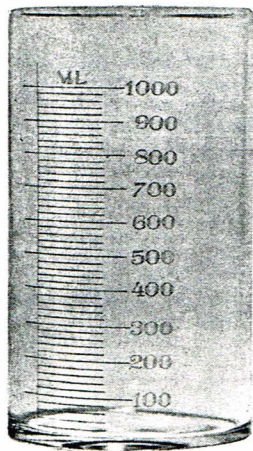
THE CAMBRIDGE GLASS COMPANY, CAMBRIDGE, OHIO



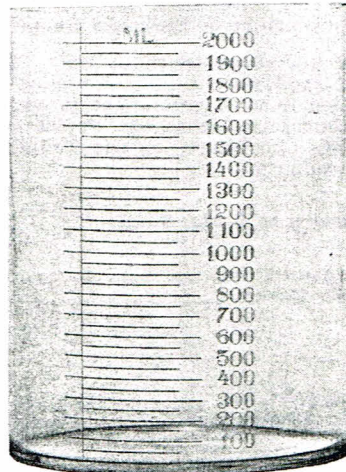
740



741



745



746

740 GRADUATED ACID JUG--Graduated in ounces.

	No. 1	2	3
Capacity, ounces -----	16	32	64
Per Dozen -----	\$10.50	13.00	16.50
Dozen to Barrel -----	4	3	2
			(19x34)

741 GRADUATED ACID JUG--Graduated in milliliters.

	No. 1	2	3
Capacity, ml. -----	500	1,000	2,000
Per Dozen -----	\$10.50	13.00	16.50
Dozen to Barrel -----	4	3	2
			(19x34)

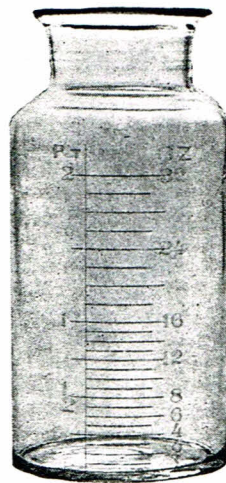
745 EXPANSION JAR--Childow--Graduated in 20 ml. divisions.

	No. 1	2
Capacity, ml. -----	1,000	1,500
Diameter, inches -----	4	5
Height, inches -----	7	6
Per Dozen -----	\$15.00	17.50
Dozen to Barrel -----	3	2 1/2

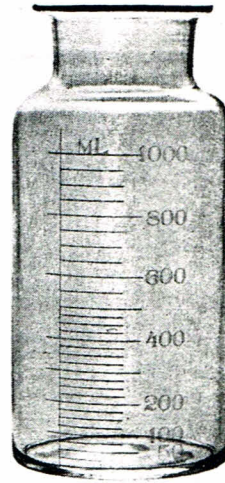
746 EXPANSION JAR--Graduated in 50 ml. divisions.

	No. 1	2
Capacity, ml. -----	2,000	3,000
Diameter, inches -----	5	5
Height, inches -----	7	11
Per Dozen -----	\$18.00	22.50
Dozen to Barrel -----	2	1 1/3

THE CAMBRIDGE GLASS COMPANY, CAMBRIDGE, OHIO



754



755

754 PERCOLATING JAR—Apothecaries Measure, Graduated in ounces.

	No. 1	2	3	4	5
Capacity, ounces	16	32	64	128	256
Per Dozen	\$10.00	14.00	17.50	27.00	42.00
Dozen to Barrel	6	3	2	$\frac{2}{3}$	$\frac{1}{2}$
				(24x30)	(19x34)

755 PERCOLATING JAR—Metric Scale, Graduated in Milliliters

	No. 1	2	3	4	5	6
Capacity, ml.	500	1,000	2,000	3,000	4,000	8,000
Per Dozen	\$10.50	14.50	18.50	27.00	30.00	45.00
Dozen to Barrel	6	3	2	$\frac{1}{2}$	$\frac{2}{3}$	$\frac{1}{2}$
					(24x30)	(19x34)

756 PERCOLATING JAR—Double Scale. Same as 754-755. Graduated in ounces and milliliters.

	No. 1	2	3	4	5	6
Capacity, ounces	16	32	64	96	128	256
Capacity, ml.	500	1,000	2,000	3,000	4,000	8,000
Per Dozen	\$13.50	18.00	22.50	33.00	36.00	57.00
Dozen to Barrel	6	3	2	$\frac{1}{2}$	$\frac{2}{3}$	$\frac{1}{2}$
					(24x30)	(19x34)



764 $\frac{1}{2}$



767



783



824

764 $\frac{1}{2}$ BANDAGE OR SURGICAL DRESSING JAR AND COVER—Hand made.
Blown, with seam. Plain round knob.

	No. 1	2	3	4	5
Capacity, ounces -----	9	20	41	76	180
Diameter, inches -----	3	4	5	6	8
Height, inches -----	3	4	5	6	8
Per Dozen -----	\$ 2.50	3.75	6.25	7.75	17.00
Dozen to Barrel -----	15*	6*	3 $\frac{1}{2}$ *	2*	2/3

(*19x34)

764 $\frac{1}{2}$ BANDAGE OR SURGICAL DRESSING JAR ONLY—No cover.

	No. 1	2	3	4	5
Capacity, ounces -----	9	20	41	76	180
Diameter, inches -----	3	4	5	6	8
Height, inches -----	3	4	5	6	8
Per Dozen -----	\$ 1.65	2.50	4.50	5.50	10.00
Dozen to Barrel -----	17 $\frac{1}{2}$	7 $\frac{1}{2}$	4	2 $\frac{1}{2}$	1

(19x34s (19x34) (19x34) (19x34) (19x34)

767 TONGUE BLADE JAR WITH COVER.

Height, inches -----	6 $\frac{3}{4}$
Diameter, inches -----	3
Per Dozen -----	\$ 4.00
Dozen to Barrel -----	2

783 INVERTED SHOW JAR

	No. 1	2	3	4
Capacity, ounces -----	4	8	16	32
Diameter base, inches -----	2	2 $\frac{5}{8}$	3	3 $\frac{1}{4}$
Height, inches -----	3 $\frac{7}{8}$	5	7	9
Approximate dia. of opening for cork, inches -----	13/16	1	1 $\frac{1}{4}$	1 $\frac{3}{8}$
Per Dozen -----	\$ 2.60	3.00	3.60	4.50
Dozen to Barrel -----	20	10	6	3

824—TEST TUBE—(Heavy Cream for samples) or Silver Solution Jar.

	No. 1	2	3
Outside Diameter, inches -----	1	1 $\frac{1}{2}$	1 $\frac{1}{2}$
Outside Length, inches -----	5	3	6 $\frac{1}{2}$
Per Dozen -----	\$ 1.30	1.20	1.60
Dozen to Barrel -----	30	35	20

Can be furnished with sand blasted spot for marking at added cost of 50 cents per dozen.

THE CAMBRIDGE GLASS COMPANY, CAMBRIDGE, OHIO



826



845 2556



836

826 MORTAR AND PESTLES--Plain

	No. 1	2	3	4	5	6
Capacity, ounces -----	1	2	4	8	16	32
Diameter, inches -----	2 3/8	2 11/16	3 11/16	3 7/8	4 3/4	5 5/8
Diameter, inches -----	2 11/16	3 3/16	4 1/8	4 3/8	5 3/8	6 1/4
Per Dozen -----	\$ 3.00	3.40	4.20	5.00	7.75	12.25
Dozen to Barrel -----	30	18	12	10	5	2 1/2

826 MORTAR ONLY

	No. 1	2	3	4	5	6
Capacity, ounces -----	1	2	4	8	16	32
Per Dozen -----	\$ 1.55	1.80	2.30	2.60	4.10	6.75
Dozen to Barrel -----	33	20	14	12	7	3 1/2

826 PESTLE ONLY

	No. 1	2	3	4	5	6
Capacity, ounces -----	1	2	4	8	16	32
Per Dozen -----	\$ 1.45	1.60	1.90	2.40	3.65	5.50
Dozen to Barrel -----	85	70	50	35	25	15

836 PHOTOGRAPHERS DEVELOPING TRAY--Fully Fire Polished. Smoothed edges.

	No. 1	2	3	4	5
Width, inches -----	4	4	5 1/2	7	8
Length, inches -----	5 1/2	6	8 1/2	9	10 1/2
Per Dozen -----	\$ 2.25	2.50	4.75	6.75	9.25
Dozen to Barrel -----	7 1/2	7	3 1/2	3	2 1/4

845 PHOTOGRAPHERS MEASURING JUG--Pressed Lines and Figures.

Jug with Funnel Cover and Metal Strainer.					
Capacity, ounces -----					32
Per Dozen -----					\$ 7.50
Dozen to Barrel -----					3
JUG WITHOUT COVER					
Per Dozen -----					\$ 5.75
Dozen to Barrel -----					3



846



847



848

846 PERCOLATOR—Cone Shape, Blown, Hand made.

	No. 1	2	3	4	5
Capacity, ounces	8	16	32	64	128
Per Dozen	\$ 5.50	6.00	7.75	10.00	12.50
Dozen to Barrel	10	6	3	1 1/3	5/6

	No. 6	7	8	9	10
Capacity, ounces	192	256	384	512	640
Per Dozen	\$18.75	27.50	42.50	60.00	82.50
Doz. to Barrel	1/2	1/3	1/3	1/6	1/6
			(22x30)		(19x34)

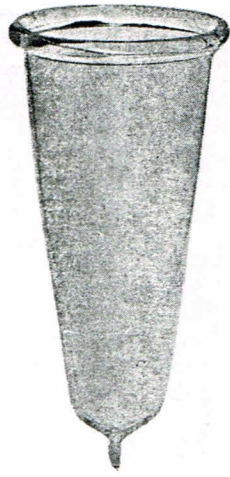
847 PERCOLATOR—Cylinder or "Oldberg" shape. Blown, Hand made.

	No. 1	2	3	4	5	6
Capacity, pints	1/4	1/2	1	1 1/2	2	2 1/2
Per Dozen	\$ 6.00	6.50	7.00	8.50	9.50	10.00
Dozen to Barrel	12	8	6	3 1/2	2 2/3	2 1/2

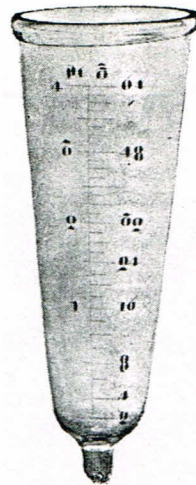
	No. 7	8	9	10	11	12
Capacity, pints	4	6	8	12	16	24
Per Dozen	\$12.00	15.50	20.00	27.00	33.00	39.00
Dozen to Barrel	1 1/2	1 1/4	2/3	1/2	1/2	1/2

848 PERCOLATOR—Cone Shape, Pressed, Bulb End.

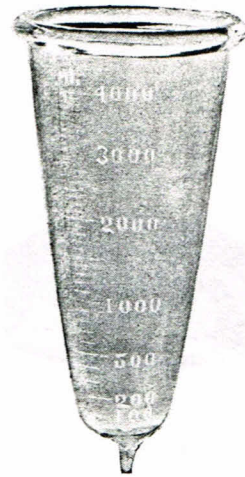
	No. 1	2	3	4
Capacity, pints	1	2	4	8
Per Dozen	\$ 2.75	3.25	6.25	9.00
Dozen to Barrel	4 1/2	2 1/2	1 1/2	5/6



850



851



852

850 PERCOLATOR—Blown. Hand made, to fit $\frac{1}{4}$ inch tube.

	No. 1	2	3	4	5
Capacity, ounces -----	8	16	32	64	128
Per Dozen -----	\$ 5.40	6.25	9.00	12.00	16.00
Dozen to Barrel -----	10	6	3	1 1/3	5/6

	No. 6	7	8	9	10
Capacity, ounces -----	192	256	384	512	640
Per Dozen -----	\$18.00	27.00	39.00	60.00	66.00
Dozen to Barrel -----	$\frac{1}{2}$	$\frac{1}{3}$	$\frac{1}{3}$	$\frac{1}{6}$	$\frac{1}{6}$
			(22x30)		(19x34)

851 PERCOLATOR—Apothecaries Measure. Graduated in ounces.

	No. 1	2	3	4	5	6	7	8	9
Capacity, ounces	16	32	48	64	96	128	192	256	384
Per Dozen ----	\$11.00	15.00	18.50	20.00	26.00	33.00	36.00	48.00	66.00
Dozen to Barrel	6	3	2	1 1/3	1	5/6	$\frac{1}{2}$	1/3	$\frac{1}{4}$

852 PERCOLATOR—Same Style as 851. Metric Scale, Graduated in Milliliters.

	No. 1	2	3	4	5	6	7	8	9
Capacity, ml.----	500	1,000	1,500	2,000	3,000	4,000	6,000	8,000	12,000
Per Dozen ----	\$11.50	15.50	19.50	22.00	28.00	36.00	39.00	51.00	72.00
Dozen to Barrel	6	3	1 1/2	1 1/3	1	5/6	$\frac{1}{2}$	1/3	1/3
									(22x30)

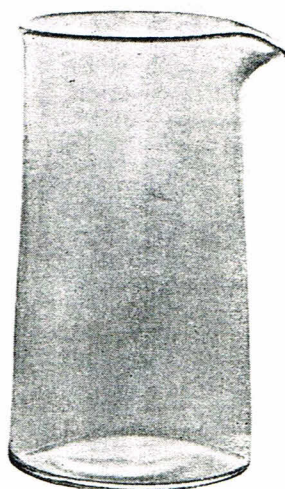
853 PERCOLATOR—Same as Style 851. Doubl Scale, graduated in ounces and Milliliters

	No. 1	2	3	4	5	6	7
Capacity, ounces ----	16	32	64	128	192	256	384
Capacity, ml. -----	500	1,000	2,000	4,000	6,000	8,000	12,000
Per Dozen -----	\$15.00	19.00	27.00	45.00	52.00	66.00	87.50
Dozen to Barrel -----	6	3	1 1/3	5/6	$\frac{1}{2}$	1/3	1/3
							(22x30)

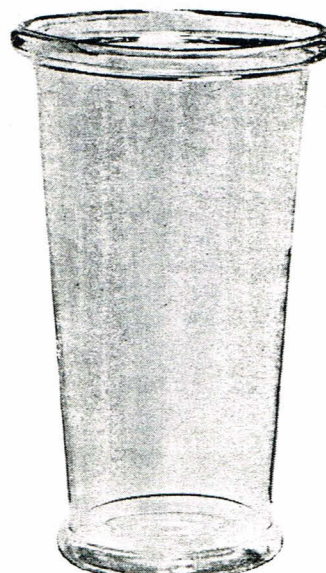


859

15



860



865

859 SCALE FEET OR BALANCE RESTS

Diameter, inches -----	1 7/8
Per Dozen -----	\$.60
Dozen to Barrel -----	150
Dozen to Carton -----	12

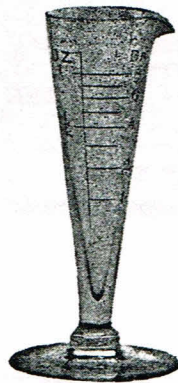
860 PRECIPITATING JAR

	No. 1	2	3	4	5	6	7	8	9
Capacity, pints	1/4	1/2	1	2	4	8	12	16	24
Per Dozen ---- \$	1.75	2.25	3.75	4.50	7.00	9.00	22.50	24.00	48.00
Dozen to Barrel	32	19	9	4	2	1	3/4	1/2	1/3
						(19x34)	(19x34)	(24x30)	

865 SURGICAL ARM IMMERSION BATH—Flat bottom.

Outside diameter at top, inches -----	9
Outside diameter at bottom, inches -----	7 1/4
Outside height, inches -----	16 1/2
Per Dozen -----	\$39.00
Dozen to Barrel -----	1 1/2
	(24x34)

THE CAMBRIDGE GLASS COMPANY, CAMBRIDGE, OHIO



871



872

871 TEST GLASS—Plain, with inside pointed bottom.

	No. 1	2	3	4	5	6
Capacity, ounces -----	1	2	4	6	8	16
Per Dozen -----	\$ 3.00	3.25	3.75	4.25	4.75	5.50
Dozen to Barrel -----	30	18	9	7	6	3

872 TEST GLASS—GRADUATED. Apothecaries measure, graduated in ounces.

	No. 1	2	3	4	5	6
Capacity, ounces -----	1	2	4	6	8	16
Per Dozen -----	\$ 4.50	5.00	6.00	6.50	7.50	9.00
Dozen to Barrel -----	30	18	9	7	6	3

873 TEST GLASS—GRADUATED. Metric Scale, graduated in milliliters.

	No. 1	2	3	4	5	6
Capacity, ml. -----	30	60	125	200	250	500
Per Dozen -----	\$ 4.50	5.00	6.50	7.00	8.25	9.00
Dozen to Barrel -----	30	18	9	7	6	3

874 TEST GLASS—GRADUATED. Double Scale, graduated in ounces and milliliters.

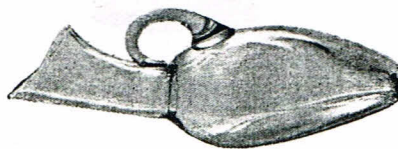
	No. 1	2	3	4	5	6
Capacity, ounces -----	1	2	4	6	8	16
Capacity, ml. -----	30	60	125	200	250	500
Per Dozen -----	\$ 5.25	6.00	7.00	8.00	9.00	10.00
Dozen to Barrel -----	30	18	9	7	6	3



876



885
886



887
888

876 TRAY—SURGICAL for instruments. Fully fire polished-smooth edges.

	No. 1	2	3	4	5
Width, inches	4	4	5½	7	8
Length, inches	5½	6	8½	9	10½
Per Dozen	\$ 2.25	2.50	4.75	6.75	9.25
Dozen to Barrel	7½	7	3 1/3	3	2¼

885 URINAL—MALE, with handle, Plain.

Per Dozen	\$ 6.25
Dozen to Barrel	3

886 URINAL—MALE, with handle, GRADUATED.

Capacity, ounces	16
Per Dozen	\$ 9.00
Dozen to Barrel	3

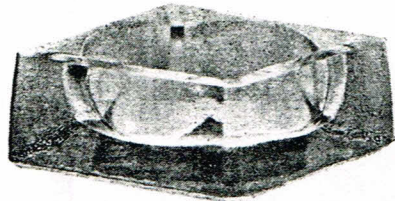
887 URINAL—FEMALE, with handle, Plain.

Per Dozen	\$ 8.00
Dozen to Barrel	3

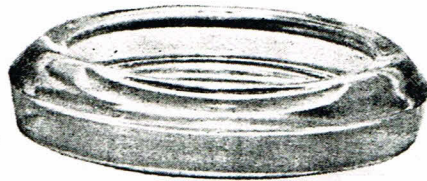
888 URINAL—FEMALE, with handle, GRADUATED.

Capacity, ounces	16
Per Dozen	\$11.00
Dozen to Barrel	3

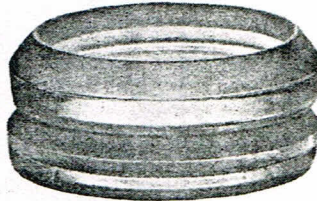
"Cambridge" Urinals are made of good weight glass, heavier in bottom end to prevent tipping.



910



912



913

910 WATCH GLASS—Square—Size 1 $\frac{5}{8}$ inch Square.

910-A—Plain

Per Gross ----- \$ 6.00
 Dozen to Barrel 150
 Dozen to Carton 12

910-B—Ground front for marking

Per Gross ----- \$ \$9.00
 Dozen to Barrel 150
 Dozen to Carton 12

912 WATCH GLASS—SYRACUSE—Size 2 $\frac{5}{8}$ inch diameter.

912-A—Plain

Per Gross ----- \$ \$7.50
 Dozen to Barrel 80
 Dozen to Carton 12

912-B—Ground top edge for marking.

Per Gross ----- \$10.50
 Dozen to Barrel 80
 Dozen to Carton 12

913 WATCH GLASS—SYRACUSE—Size 2 $\frac{5}{8}$ inch diameter. Groove in bottom for stacking.

913-A—Plain, grooved to stack,

Per Gross ----- \$ 6.00
 Dozen to Barrel ----- 80
 Dozen to Carton ----- 12

913-B—Ground top edge, grooved to stack, not ground in.

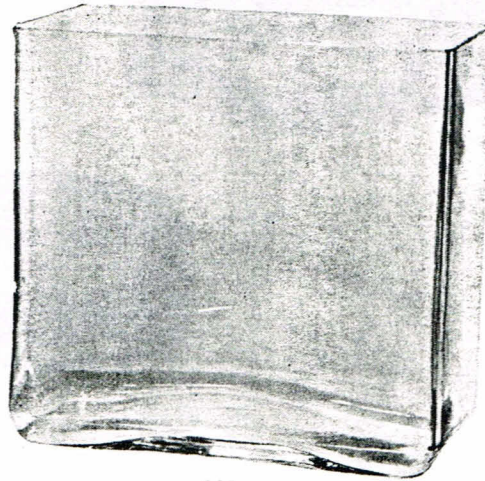
Per Gross ----- \$ 9.00
 Dozen to Barrel ----- 80
 Dozen to Carton ----- 12

913-C—Ground top edge, ground-ingroove to stack and be air tight.

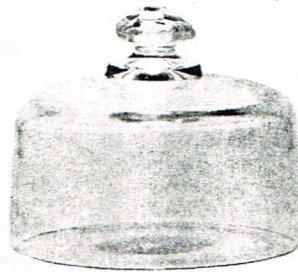
Per Gross ----- \$16.00
 Dozen to Barrel ----- 80
 Dozen to Carton ----- 12



2590 $\frac{1}{2}$



925



920

920 WATCHMAKERS or MOVEMENT COVER—To cover small objects.

	No. 1	2	3	4	5	6	7	8	9
Inside diam., in.	3	3 $\frac{1}{4}$	3 $\frac{1}{2}$	3 $\frac{3}{4}$	4	4 $\frac{3}{4}$	5	5 $\frac{1}{4}$	5 $\frac{1}{2}$
Inside height., in.	2	2 $\frac{1}{16}$	2 $\frac{1}{8}$	2 $\frac{1}{8}$	2 $\frac{1}{8}$	2 $\frac{1}{2}$	2 $\frac{1}{2}$	2 $\frac{1}{2}$	2 $\frac{1}{2}$
Per Dozen	\$1.30	1.40	1.75	1.80	2.00	2.25	2.50	2.75	3.00
Doz. to Bbl.	20	18	15	14	13	10	7	7	6

925 OBLONG AQUARIA OR MUSEUM JAR—BLOWN—hand made (without plate glass cover)

Height, inches	10 $\frac{1}{2}$
Length, inches	10 $\frac{1}{2}$
Width, inches	6 $\frac{1}{2}$
Per Dozen	\$36.00
Dozen to Barrel	1/3

2590 $\frac{1}{2}$ SPECIMEN DISHES

	No. 1	2
Diameter, inches	4 $\frac{1}{2}$	8
Per Dozen	\$ 2.00	6.25
Dozen to Barrel	10	2 $\frac{1}{2}$

INDEX

	Page		Page
A			
Acid Bottles	5	Exact Graduate	20
Acid Jug	22	Expansion Jar	22
Alcohol Cups	5	F	
Alcohol Lamps	5	Fluted Funnels	19
Aquaria	6	Funnels—Diagonal Fluting	19
Aquaria, Oblong	32	Handy	19
Arm Immersion Bath	28	Plain Pressed	18
B			
Balance Rests	28	Ribbed	18
Balsam Bottles	7	Sugar	18-19
Bandage or Dressing Jars	24	G	
Bath, Surgical Arm Immersion	28	Glasses—Bladder	9
Battery Jars	8	Bell	9-10-11-12
Beaker, Pressed	13	Test	29
Beaker Tumbler	13	Watch	31
Bell Glasses	9-10-11-12	Graduated Jug	22
Benzine Cups	7	Graduated Percolators	27
Bladder Glasses	9	Graduates	20-21
Bottles—Acid	5	H	
Balsam	7	Handy Funnels	19
Reagent Cap	13	Hydrometer Cylinders	14
Wide mouth, percolating ..	13	I	
C			
Cambridge Graduates	20-21	Inverted Show Jar	24
Chambers, Moist	15	J	
Cone Shape Percolators	26-27	Jars—Bandage or Dressing	24
Coplin Staining Jar	16	Battery	8
Cover, Watchmaker or Movement ..	32	Coplin Staining	17
Crystalizing Dishes	13	Desiccating	17
Culture Dishes	15	Expansion	22
Cups—Alcohol	5	Hydrometer	14
Cups—Benzine	7	Inverted Show	24
Cylinders, Hydrometer	14	Leyden	13
Cylinders, Milk and Cream Test ..	24	Museum	32
D			
Desiccating Jars	17	Percolating	13-23
Developing Tray, Photographers	25	Precipitating	28
Double Scale Graduates	20-21	Show, Inverted	24
Dishes, Crystalizing	13	Jug, Graduated	22
Dishes, Petri	15	L	
Dishes, Culture	15	Lamps—Alcohol	5
Dishes, Specimen	32	Leyden Jar	13
Dish, Staining or Slide	16		
Dish, Stender	16		

I N D E X (Continued)

	Page	
M		
Measuring Jug, Photographers ----	25	
Metric Scale Graduates -----	20-21	
Milk and Cream Test Cylinders ---	24	
Moist Chambers -----	15	
Mortars and Pestals -----	25	
Movement Covers, Watch -----	32	
Museum Jar -----	32	
O		
Oblong Aquaria -----	32	
P		
Perfection Graduate -----	21	
Percolating Jars -----	13-23	
Percolators -----	26-27	
Pestals and Mortars -----	25	
Petri Dish -----	15	
Plain Pressed Funnels -----	18	
Photographers Developing Tray ---	25	
Photographers Graduate -----	20-21	
Photographers Measuring Jug ----	25	
Precipitating Jar -----	28	
Pressed Beaker -----	13	
R		
Reagent Bottle Cap -----	13	
Ribbed Funnels -----	18	
S		
Scale Feet -----	23	
Show Jar, Inverted -----	24	
Single Scale Graduate -----	20-21	
Specimen Dishes -----	32	
Staining Jar, Coplin -----	16	
Staining or Slide Box -----	16	
Stender Dish -----	16	
Surgical Arm Immersion Bath ----	28	
Surgical Tray -----	30	
Sugar Funnels -----	18-19	
T		
Terms, Quotations, Packages, etc. . .	4	
Test Cylinders, Milk and Cream ----	24	
Test Glass -----	29	
Test Tube -----	24	
Tongue Blade Jar -----	24	
Tray, Surgical -----	30	
Tube, Test -----	24	
Tumbler, Beaker -----	13	
U		
Urinals -----	30	
W		
Watch Glasses -----	31	
Watch Movement Covers -----	32	
Wide Mouth Bottle -----	13	